

ドームハウスシリーズ ハヶ岳 42FT



| | | | | | |
|-------------------------|------------|-------------------------|------------|-----------------------|------------|
| Oil Pattern Distance: | 42 Feet | Reverse Brush Drop: | 31 Feet | Oil Per Board: | 40 uL |
| Forward Oil Total: | 12.92 mL | Reverse Oil Total: | 7.52 mL | Volume Oil Total: | 20.44 mL |
| Forward Boards Crossed: | 323 Boards | Reverse Boards Crossed: | 188 Boards | Total Boards Crossed: | 511 Boards |

| | Start | Stop | Loads | Mics | Speed | Crossed | Start | End | Feet | T.Oil |
|---|-------|------|-------|------|-------|---------|-------|------|------|-------|
| 1 | 3L | 3R | 1 | 40 | 10 | 35 | 0.0 | 0.0 | 0.0 | 1400 |
| 2 | 6L | 6R | 3 | 40 | 14 | 87 | 0.0 | 5.9 | 5.9 | 3480 |
| 3 | 9L | 9R | 2 | 40 | 14 | 46 | 5.9 | 9.8 | 3.9 | 1840 |
| 4 | 10L | 10R | 3 | 40 | 18 | 63 | 9.8 | 17.4 | 7.6 | 2520 |
| 5 | 12L | 12R | 3 | 40 | 22 | 51 | 17.4 | 26.7 | 9.3 | 2040 |
| 6 | 13L | 13R | 2 | 40 | 26 | 30 | 26.7 | 34.0 | 7.3 | 1200 |
| 7 | 15L | 15R | 1 | 40 | 30 | 11 | 34.0 | 38.2 | 4.2 | 440 |
| 8 | 2L | 2R | 0 | 40 | 30 | 0 | 38.2 | 42.0 | 3.8 | 0 |

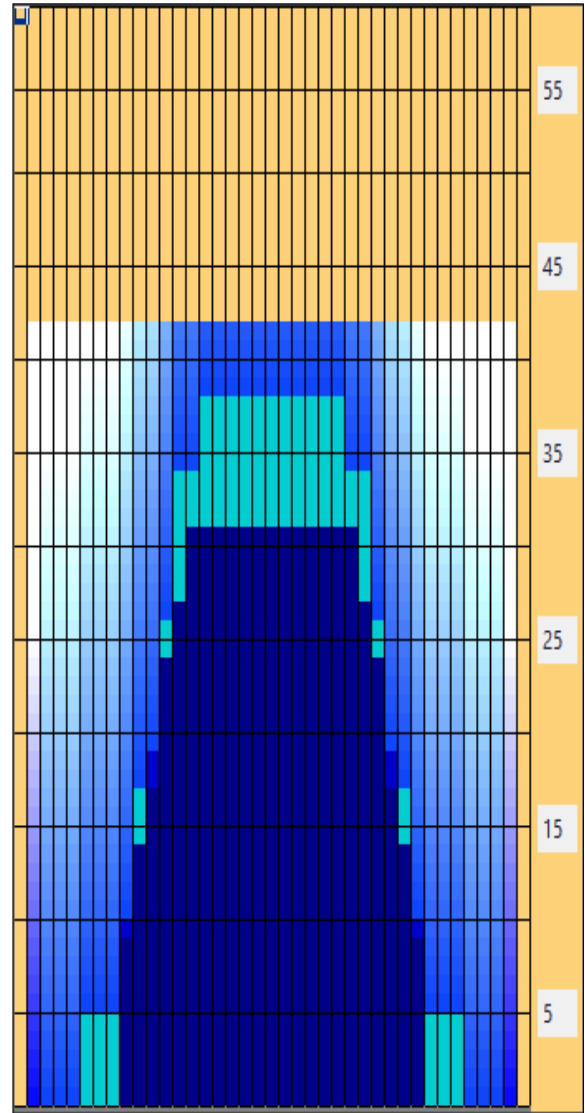
Navigation: Forward Reverse More

| | Start | Stop | Loads | Mics | Speed | Crossed | Start | End | Feet | T.Oil |
|---|-------|------|-------|------|-------|---------|-------|------|-------|-------|
| 1 | 2L | 2R | 0 | 40 | 30 | 0 | 42.0 | 31.0 | -11.0 | 0 |
| 2 | 14L | 14R | 1 | 40 | 30 | 13 | 31.0 | 26.8 | -4.2 | 520 |
| 3 | 13L | 13R | 1 | 40 | 22 | 15 | 26.8 | 23.7 | -3.1 | 600 |
| 4 | 12L | 12R | 2 | 40 | 18 | 34 | 23.7 | 18.6 | -5.1 | 1360 |
| 5 | 11L | 11R | 2 | 40 | 18 | 38 | 18.6 | 13.5 | -5.1 | 1520 |
| 6 | 10L | 10R | 2 | 40 | 14 | 42 | 13.5 | 9.6 | -3.9 | 1680 |
| 7 | 9L | 9R | 2 | 40 | 14 | 46 | 9.6 | 5.7 | -3.9 | 1840 |
| 8 | 2L | 2R | 0 | 40 | 14 | 0 | 5.7 | 0.0 | -5.7 | 0 |

Navigation: Forward Reverse More

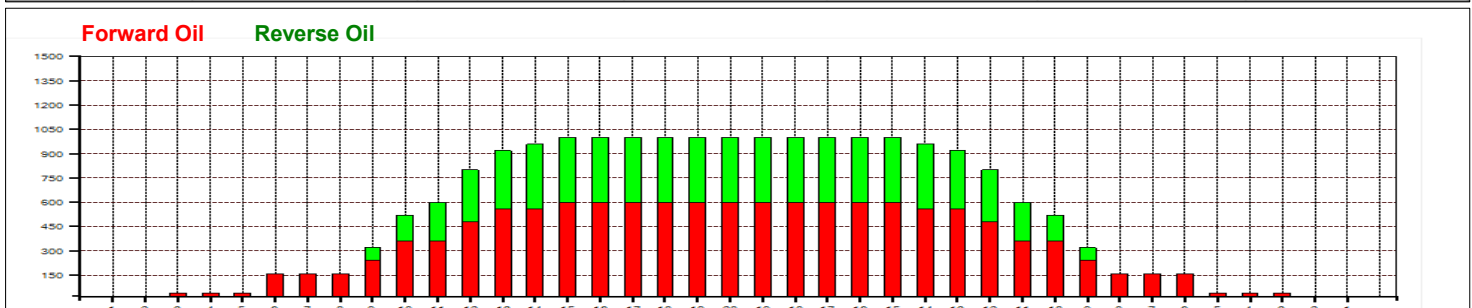
Conditioner:
Type In or Select One

- Forward
- Reverse
- Combined
- Buff



アウトサイドのオイルが極端に少ないコンディション！
 今までの名山シリーズの中で最もインサイドからの
 投球がおすすめ！
 6枚目から8枚目フラットゾーンは避けなと。
 By Kaneko

| Item | 3L-7L:18L-18R | 8L-12L:18L-18R | 13L-17L:18L-18R | 18L-18R:17R-13R | 18L-18R:12R-8R | 18L-18R:7R-3R |
|------------------|----------------------|---------------------|---------------------|----------------------|---------------------|----------------------|
| Description | Outside Track:Middle | Middle Track:Middle | Inside Track:Middle | Middle: Inside Track | Middle:Middle Track | Middle:Outside Track |
| Track Zone Ratio | 11.36 | 2.08 | 1.02 | 1.02 | 2.08 | 11.36 |





ドームハウスシリーズ ハヶ岳 42FT

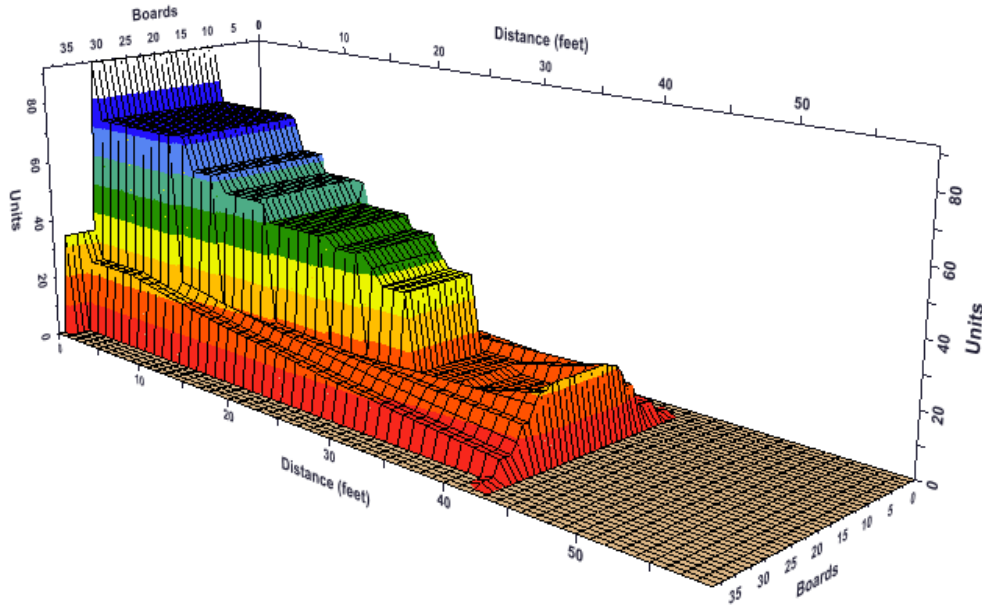
Oil Pattern Distance: 42 Feet Reverse Brush Drop: 31 Feet Oil Per Board: 40 uL
 Forward Oil Total: 12.92 mL Reverse Oil Total: 7.52 mL Volume Oil Total: 20.44 mL
 Forward Boards Crossed: 323 Boards Reverse Boards Crossed: 188 Boards Total Boards Crossed: 511 Boards

| | Start | Stop | Loads | Mics | Speed | Crossed | Start | End | Feet | T.Oil |
|---|-------|------|-------|------|-------|---------|-------|------|------|-------|
| 1 | 3L | 3R | 1 | 40 | 10 | 35 | 0.0 | 0.0 | 0.0 | 1400 |
| 2 | 6L | 6R | 3 | 40 | 14 | 87 | 0.0 | 5.9 | 5.9 | 3480 |
| 3 | 9L | 9R | 2 | 40 | 14 | 46 | 5.9 | 9.8 | 3.9 | 1840 |
| 4 | 10L | 10R | 3 | 40 | 18 | 63 | 9.8 | 17.4 | 7.6 | 2520 |
| 5 | 12L | 12R | 3 | 40 | 22 | 51 | 17.4 | 26.7 | 9.3 | 2040 |
| 6 | 13L | 13R | 2 | 40 | 26 | 30 | 26.7 | 34.0 | 7.3 | 1200 |
| 7 | 15L | 15R | 1 | 40 | 30 | 11 | 34.0 | 38.2 | 4.2 | 440 |
| 8 | 2L | 2R | 0 | 40 | 30 | 0 | 38.2 | 42.0 | 3.8 | 0 |

Navigation: Forward Reverse More

| | Start | Stop | Loads | Mics | Speed | Crossed | Start | End | Feet | T.Oil |
|---|-------|------|-------|------|-------|---------|-------|------|-------|-------|
| 1 | 2L | 2R | 0 | 40 | 30 | 0 | 42.0 | 31.0 | -11.0 | 0 |
| 2 | 14L | 14R | 1 | 40 | 30 | 13 | 31.0 | 26.8 | -4.2 | 520 |
| 3 | 13L | 13R | 1 | 40 | 22 | 15 | 26.8 | 23.7 | -3.1 | 600 |
| 4 | 12L | 12R | 2 | 40 | 18 | 34 | 23.7 | 18.6 | -5.1 | 1360 |
| 5 | 11L | 11R | 2 | 40 | 18 | 38 | 18.6 | 13.5 | -5.1 | 1520 |
| 6 | 10L | 10R | 2 | 40 | 14 | 42 | 13.5 | 9.6 | -3.9 | 1680 |
| 7 | 9L | 9R | 2 | 40 | 14 | 46 | 9.6 | 5.7 | -3.9 | 1840 |
| 8 | 2L | 2R | 0 | 40 | 14 | 0 | 5.7 | 0.0 | -5.7 | 0 |

Navigation: Forward Reverse More



Viewing options: Left 90° Left 45° Front 0° Front 45° Overhead Right 90° Right 45°