

# 202012 ハウスコンディション



**Oil Pattern Distance:** 42 Feet      **Reverse Brush Drop:** 38 Feet      **Oil Per Board:** 35 uL  
**Forward Oil Total:** 8.925 mL      **Reverse Oil Total:** 8.54 mL      **Volume Oil Total:** 17.465 mL  
**Forward Boards Crossed:** 255 Boards      **Reverse Boards Crossed:** 244 Boards      **Total Boards Crossed:** 499 Boards

	Start	Stop	Loads	Mics	Speed	Crossed	Start	End	Feet	T.Oil
1	3L	3R	1	35	10	35	0.0	0.0	0.0	1225
2	5L	5R	1	35	10	31	0.0	1.4	1.4	1085
3	7L	7R	2	35	14	54	1.4	5.3	3.9	1890
4	9L	9R	2	35	18	46	5.3	10.4	5.1	1610
5	11L	11R	2	35	18	38	10.4	15.5	5.1	1330
6	12L	12R	3	35	22	51	15.5	24.8	9.3	1785
7	2L	2R	0	35	26	0	24.8	33.0	8.2	0
8	2L	2R	0	35	30	0	33.0	42.0	9.0	0

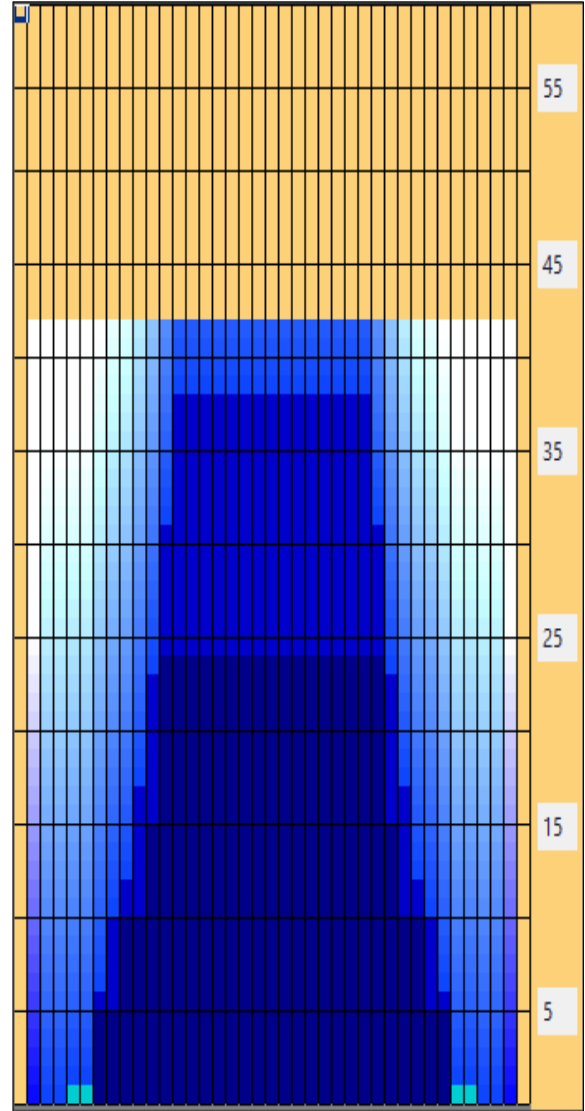
Navigation: Forward Reverse More

	Start	Stop	Loads	Mics	Speed	Crossed	Start	End	Feet	T.Oil
1	2L	2R	0	40	30	0	42.0	38.0	-4.0	0
2	13L	13R	2	35	26	30	38.0	30.7	-7.3	1050
3	12L	12R	2	35	26	34	30.7	23.4	-7.3	1190
4	11L	11R	2	35	22	38	23.4	17.2	-6.2	1330
5	10L	10R	2	35	18	42	17.2	12.1	-5.1	1470
6	9L	9R	1	35	14	23	12.1	10.2	-1.9	805
7	8L	8R	2	35	14	50	10.2	6.3	-3.9	1750
8	7L	7R	1	35	14	27	6.3	4.4	-1.9	945
9	2L	2R	0	35	14	0	4.4	0.0	-4.4	0

Navigation: Forward Reverse More

Conditioner:  
Type In or Select One

- Forward
- Reverse
- Combined
- Buff



Item	3L-7L:18L-18R	8L-12L:18L-18R	13L-17L:18L-18R	18L-18R:17R-13R	18L-18R:12R-8R	18L-18R:7R-3R
Description	Outside Track:Middle	Middle Track:Middle	Inside Track:Middle	Middle: Inside Track	Middle:Middle Track	Middle:Outside Track
Track Zone Ratio	10.45	1.74	1	1	1.74	10.45

