

202108 ハウスコンディション



Oil Pattern Distance: 43 Feet **Reverse Brush Drop:** 24 Feet **Oil Per Board:** 40 uL
Forward Oil Total: 12.4 mL **Reverse Oil Total:** 5.36 mL **Volume Oil Total:** 17.76 mL
Forward Boards Crossed: 310 Boards **Reverse Boards Crossed:** 134 Boards **Total Boards Crossed:** 444 Boards

	Start	Stop	Loads	Mics	Speed	Crossed	Start	End	Feet	T.Oil
1	3L	3R	1	40	10	35	0.0	0.0	0.0	1400
2	5L	5R	1	40	10	31	0.0	1.4	1.4	1240
3	7L	7R	2	40	14	54	1.4	5.3	3.9	2160
4	10L	8R	3	40	14	69	5.3	11.2	5.9	2760
5	12L	10R	3	40	18	57	11.2	18.8	7.6	2280
6	13L	11R	2	40	18	34	18.8	23.9	5.1	1360
7	13L	13R	2	40	22	30	23.9	30.1	6.2	1200
8	2L	2R	0	40	26	0	30.1	35.0	4.9	0
9	2L	2R	0	40	30	0	35.0	43.0	8.0	0

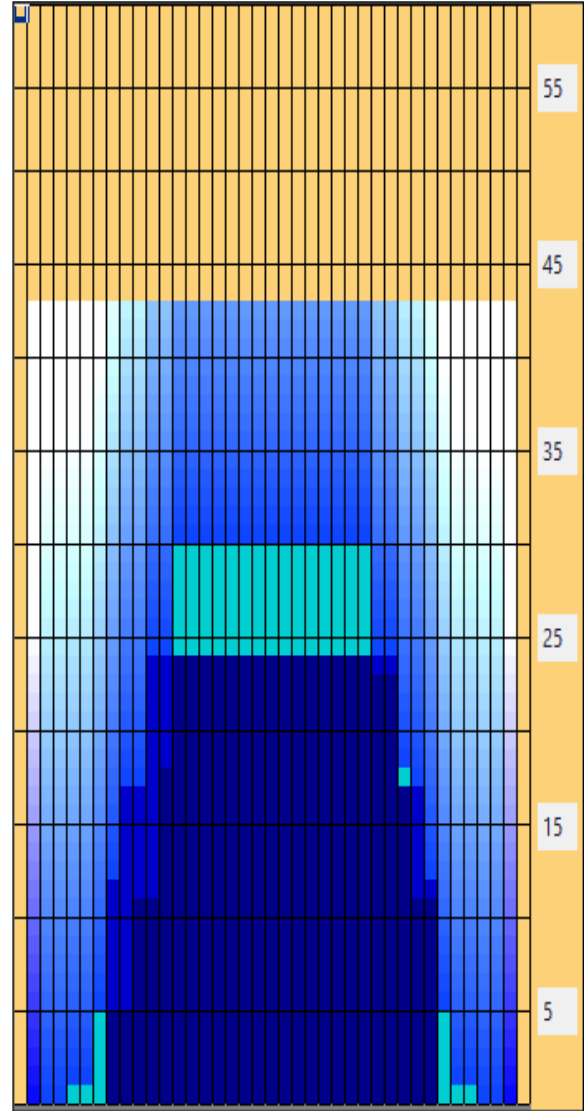
Navigation: Forward Reverse More

	Start	Stop	Loads	Mics	Speed	Crossed	Start	End	Feet	T.Oil
1	2L	2R	0	40	30	0	43.0	24.0	-19.0	0
2	11L	11R	2	40	26	38	24.0	16.7	-7.3	1520
3	9L	9R	2	40	18	46	16.7	11.6	-5.1	1840
4	8L	8R	2	40	18	50	11.6	6.5	-5.1	2000
5	2L	2R	0	40	14	0	6.5	0.0	-6.5	0

Navigation: Forward Reverse More

Conditioner:
Type In or Select One

- Forward
- Reverse
- Combined
- Buff



Item	3L-7L:18L-18R	8L-12L:18L-18R	13L-17L:18L-18R	18L-18R:17R-13R	18L-18R:12R-8R	18L-18R:7R-3R
Description	Outside Track:Middle	Middle Track:Middle	Inside Track:Middle	Middle: Inside Track	Middle:Middle Track	Middle:Outside Track
Track Zone Ratio	10	1.85	1	1	1.43	10

