

202205 ハウスコンディション



Oil Pattern Distance:	40 Feet	Reverse Brush Drop:	35 Feet	Oil Per Board:	35 uL
Forward Oil Total:	10.255 mL	Reverse Oil Total:	10.16 mL	Volume Oil Total:	20.415 mL
Forward Boards Crossed:	293 Boards	Reverse Boards Crossed:	254 Boards	Total Boards Crossed:	547 Boards

	Start	Stop	Loads	Mics	Speed	Crossed	Start	End	Feet	T.Oil
1	3L	3R	1	35	10	35	0.0	0.0	0.0	1225
2	4L	4R	1	35	14	33	0.0	1.9	1.9	1155
3	5L	5R	2	35	14	62	1.9	5.8	3.9	2170
4	8L	8R	4	35	18	100	5.8	16.0	10.2	3500
5	10L	10R	3	35	18	63	16.0	23.6	7.6	2205
6	2L	2R	0	35	26	0	23.6	24.0	0.4	0
7	2L	2R	0	35	30	0	24.0	40.0	16.0	0

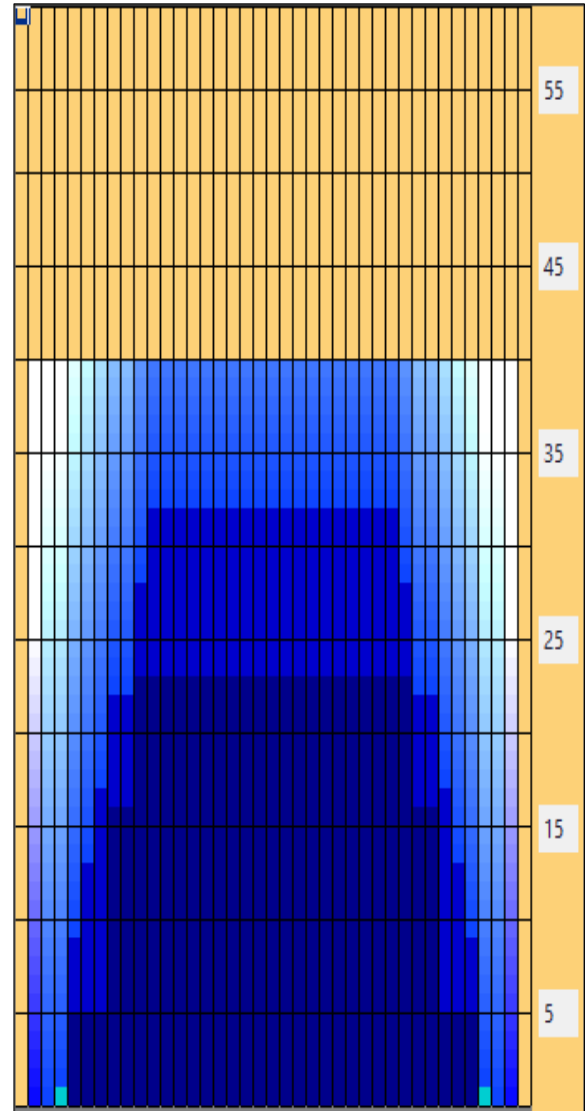
Conditioner:
Type In or Select One

Forward

Reverse

Combined

Buff



	Start	Stop	Loads	Mics	Speed	Crossed	Start	End	Feet	T.Oil
1	2L	2R	0	40	30	0	40.0	32.0	-8.0	0
2	11L	11R	1	40	26	19	32.0	28.4	-3.6	665
3	10L	10R	2	40	22	42	28.4	22.2	-6.2	1470
4	8L	8R	2	40	18	50	22.2	17.1	-5.1	1750
5	7L	7R	2	40	14	54	17.1	13.2	-3.9	1890
6	6L	6R	2	40	14	58	13.2	9.3	-3.9	2030
7	5L	5R	1	40	14	31	9.3	7.4	-1.9	1085
8	2L	2R	0	40	14	0	7.4	0.0	-7.4	0

Item	3L-7L:18L-18R	8L-12L:18L-18R	13L-17L:18L-18R	18L-18R:17R-13R	18L-18R:12R-8R	18L-18R:7R-3R
Description	Outside Track:Middle	Middle Track:Middle	Inside Track:Middle	Middle: Inside Track	Middle:Middle Track	Middle:Outside Track
Track Zone Ratio	4.44	1.14	1	1	1.14	4.44

