

ドームハウスシリーズ 白山 42FT



Oil Pattern Distance:	42 Feet	Reverse Brush Drop:	30 Feet	Oil Per Board:	40 uL
Forward Oil Total:	12.24 mL	Reverse Oil Total:	7.44 mL	Volume Oil Total:	19.68 mL
Forward Boards Crossed:	306 Boards	Reverse Boards Crossed:	186 Boards	Total Boards Crossed:	492 Boards

	Start	Stop	Loads	Mics	Speed	Crossed	Start	End	Feet	T.Oil
1	2L	2R	1	40	10	37	0.0	0.0	0.0	1480
2	4L	4R	2	40	10	66	0.0	2.8	2.8	2640
3	6L	6R	2	40	14	58	2.8	6.7	3.9	2320
4	9L	9R	3	40	18	69	6.7	14.3	7.6	2760
5	10L	10R	2	40	18	42	14.3	19.4	5.1	1680
6	12L	12R	2	40	22	34	19.4	25.6	6.2	1360
7	2L	2R	0	40	30	0	25.6	42.0	16.4	0

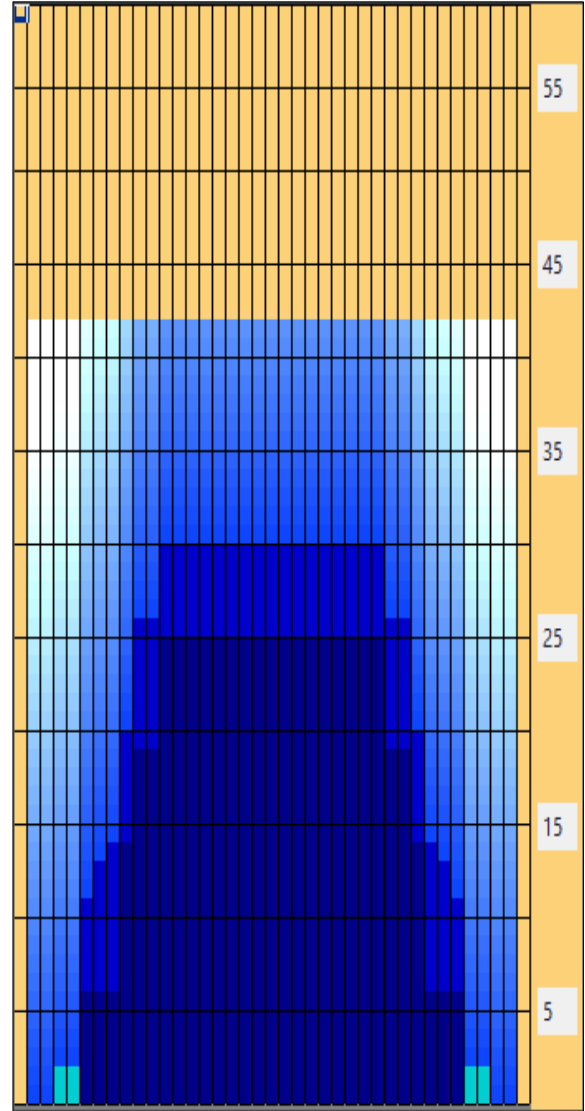
Navigation: Forward Reverse More

	Start	Stop	Loads	Mics	Speed	Crossed	Start	End	Feet	T.Oil
1	2L	2R	0	40	30	0	42.0	30.0	-12.0	0
2	12L	12R	1	40	30	17	30.0	25.8	-4.2	680
3	10L	10R	2	40	22	42	25.8	19.6	-6.2	1680
4	9L	9R	2	40	18	46	19.6	14.5	-5.1	1840
5	8L	8R	1	40	14	25	14.5	12.6	-1.9	1000
6	7L	7R	1	40	14	27	12.6	10.7	-1.9	1080
7	6L	6R	1	40	14	29	10.7	8.8	-1.9	1160
8	2L	2R	0	40	14	0	8.8	0.0	-8.8	0

Navigation: Forward Reverse More

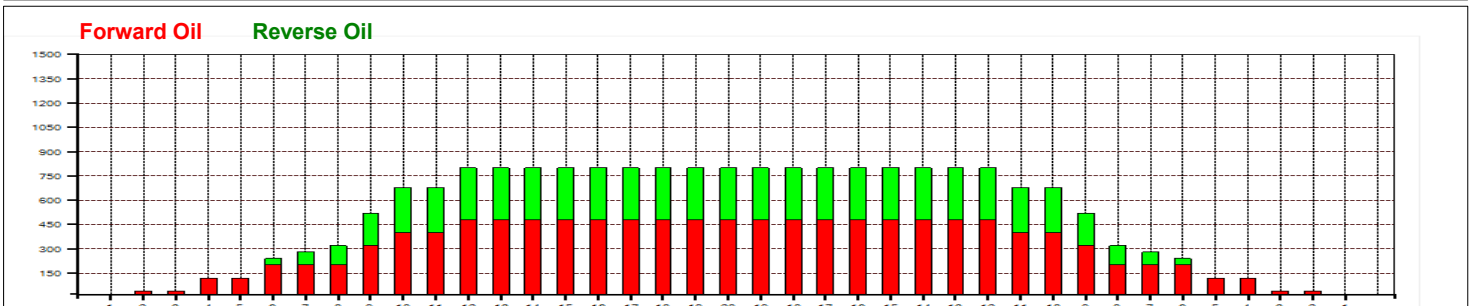
Conditioner:
Type In or Select One

- Forward
- Reverse
- Combined
- Buff



白山シリーズの中で一番難易度が高いかもしれません。
インサイドはオイルの壁を感じにくく、
アウトサイドはオイルの変化が速く感じるかも？
基本的には8枚目～10枚目の壁を。
もしくは4枚目～6枚目の壁を感じて攻略を！！ by kaneko

Item	3L-7L:18L-18R	8L-12L:18L-18R	13L-17L:18L-18R	18L-18R:17R-13R	18L-18R:12R-8R	18L-18R:7R-3R
Description	Outside Track:Middle	Middle Track:Middle	Inside Track:Middle	Middle: Inside Track	Middle:Middle Track	Middle:Outside Track
Track Zone Ratio	5	1.33	1	1	1.33	5





ドームハウスシリーズ 白山 42FT

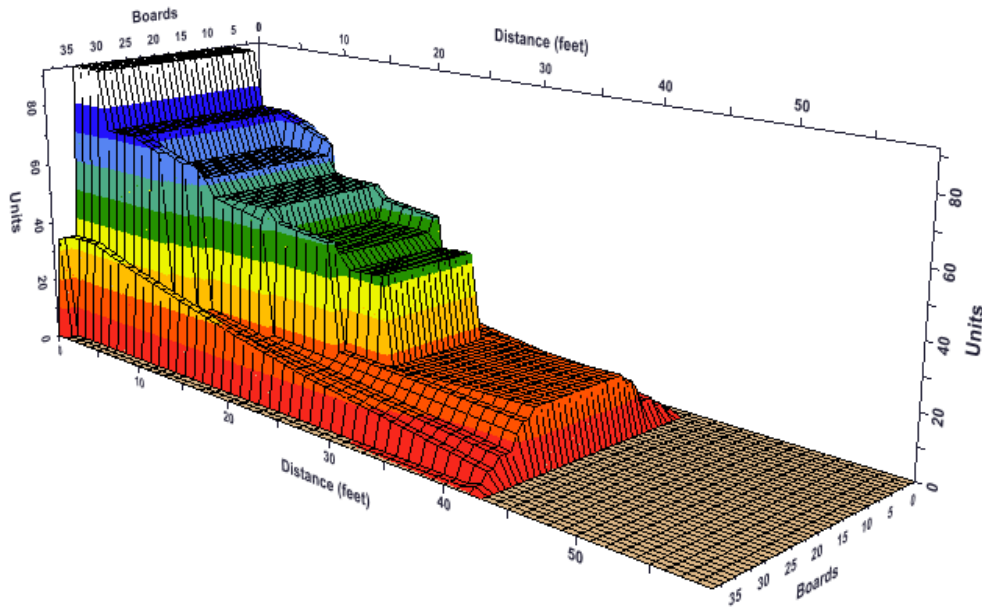
Oil Pattern Distance: 42 Feet Reverse Brush Drop: 30 Feet Oil Per Board: 40 uL
 Forward Oil Total: 12.24 mL Reverse Oil Total: 7.44 mL Volume Oil Total: 19.68 mL
 Forward Boards Crossed: 306 Boards Reverse Boards Crossed: 186 Boards Total Boards Crossed: 492 Boards

	Start	Stop	Loads	Mics	Speed	Crossed	Start	End	Feet	T.Oil
1	2L	2R	1	40	10	37	0.0	0.0	0.0	1480
2	4L	4R	2	40	10	66	0.0	2.8	2.8	2640
3	6L	6R	2	40	14	58	2.8	6.7	3.9	2320
4	9L	9R	3	40	18	69	6.7	14.3	7.6	2760
5	10L	10R	2	40	18	42	14.3	19.4	5.1	1680
6	12L	12R	2	40	22	34	19.4	25.6	6.2	1360
7	2L	2R	0	40	30	0	25.6	42.0	16.4	0

Navigation: Forward Reverse More

	Start	Stop	Loads	Mics	Speed	Crossed	Start	End	Feet	T.Oil
1	2L	2R	0	40	30	0	42.0	30.0	-12.0	0
2	12L	12R	1	40	30	17	30.0	25.8	-4.2	680
3	10L	10R	2	40	22	42	25.8	19.6	-6.2	1680
4	9L	9R	2	40	18	46	19.6	14.5	-5.1	1840
5	8L	8R	1	40	14	25	14.5	12.6	-1.9	1000
6	7L	7R	1	40	14	27	12.6	10.7	-1.9	1080
7	6L	6R	1	40	14	29	10.7	8.8	-1.9	1160
8	2L	2R	0	40	14	0	8.8	0.0	-8.8	0

Navigation: Forward Reverse More



Viewing options: Left 90° Left 45° Front 0° Front 45° Overhead Right 90° Right 45°