

ドームハウスシリーズ 羊蹄山 40FT



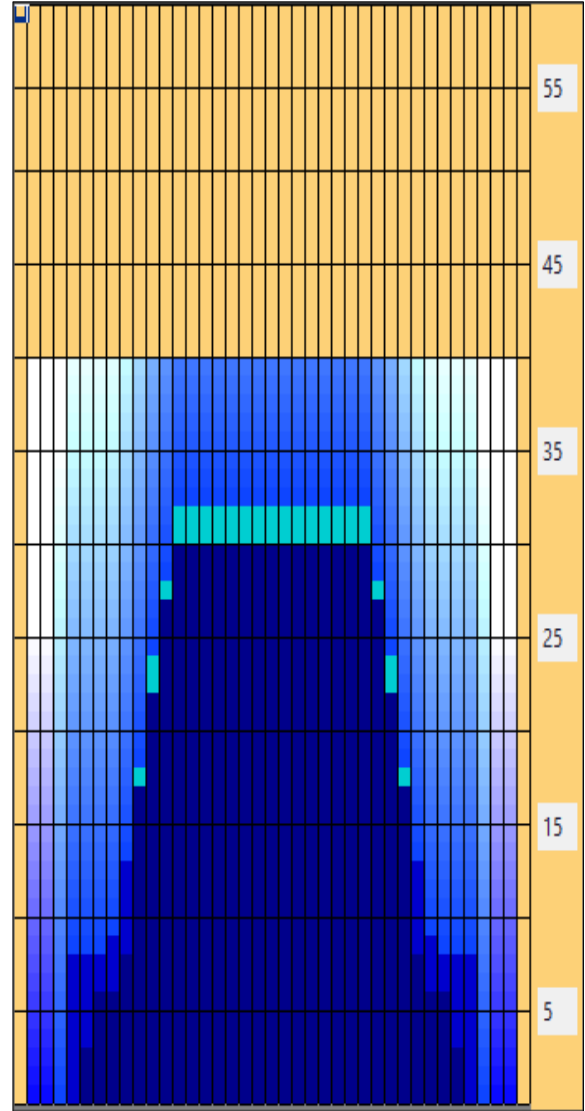
Oil Pattern Distance:	40 Feet	Reverse Brush Drop:	30 Feet	Oil Per Board:	40 uL
Forward Oil Total:	10.96 mL	Reverse Oil Total:	9.24 mL	Volume Oil Total:	20.2 mL
Forward Boards Crossed:	274 Boards	Reverse Boards Crossed:	231 Boards	Total Boards Crossed:	505 Boards

	Start	Stop	Loads	Mics	Speed	Crossed	Start	End	Feet	T.Oil
1	4L	4R	1	40	10	33	0.0	0.0	0.0	1320
2	6L	6R	2	40	14	58	0.0	3.9	3.9	2320
3	7L	7R	1	40	18	27	3.9	6.4	2.5	1080
4	9L	9R	1	40	18	23	6.4	8.9	2.5	920
5	10L	10R	3	40	22	63	8.9	18.2	9.3	2520
6	11L	11R	2	40	22	38	18.2	24.4	6.2	1520
7	12L	12R	1	40	26	17	24.4	28.0	3.6	680
8	13L	13R	1	40	30	15	28.0	32.2	4.2	600
9	2L	2R	0	40	30	0	32.2	40.0	7.8	0

	Start	Stop	Loads	Mics	Speed	Crossed	Start	End	Feet	T.Oil
1	2L	2R	0	40	30	0	40.0	30.0	-10.0	0
2	13L	13R	1	40	22	15	30.0	26.9	-3.1	600
3	12L	12R	2	40	18	34	26.9	21.8	-5.1	1360
4	11L	11R	2	40	18	38	21.8	16.7	-5.1	1520
5	10L	10R	2	40	14	42	16.7	12.8	-3.9	1680
6	9L	9R	2	40	14	46	12.8	8.9	-3.9	1840
7	8L	8R	1	40	10	25	8.9	7.5	-1.4	1000
8	5L	5R	1	40	10	31	7.5	6.1	-1.4	1240
9	2L	2R	0	40	10	0	6.1	0.0	-6.1	0

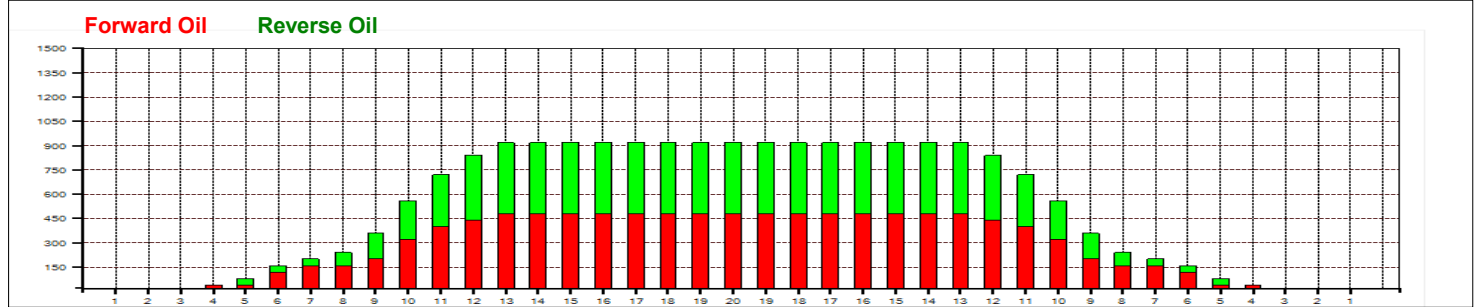
Conditioner:
Type In or Select One

- Forward
- Reverse
- Combined
- Buff



名山シリーズの中で一番オイルの長さが短いレーンコンディションです。
ボールの曲がりが大きくなりやすく、投球ラインがワイドになると思います！
オイルの変化が出るまでは走りの出やすい（スキッド多め）ボールが適切かも
転がりやすく、摩擦力が高く、
グリップの強いボールではロールアウトにご注意を。。 b y kaneko

Item	3L-7L:18L-18R	8L-12L:18L-18R	13L-17L:18L-18R	18L-18R:17R-13R	18L-18R:12R-8R	18L-18R:7R-3R
Description	Outside Track:Middle	Middle Track:Middle	Inside Track:Middle	Middle: Inside Track	Middle:Middle Track	Middle:Outside Track
Track Zone Ratio	9.58	1.69	1	1	1.69	9.58



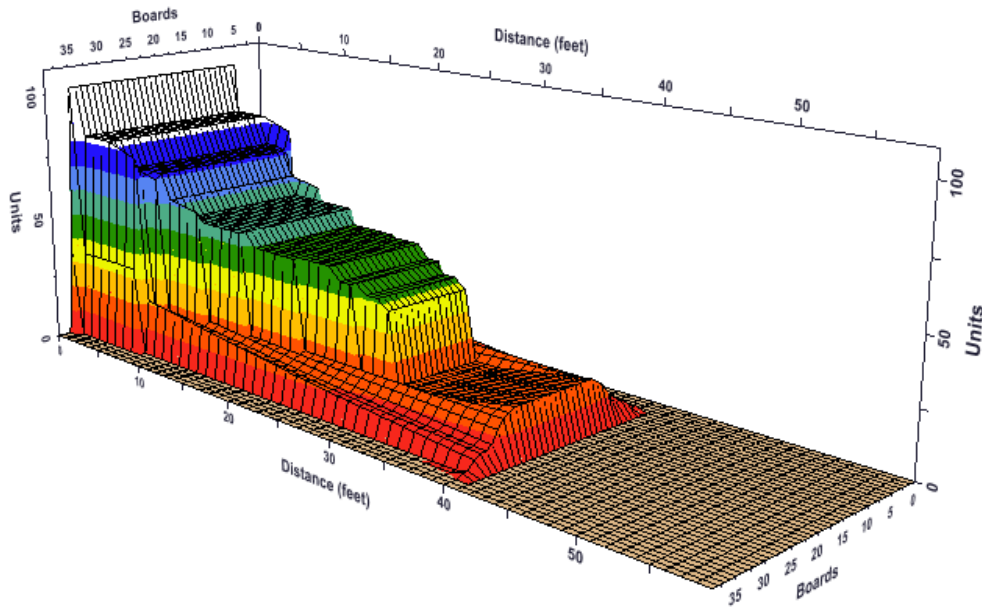


ドームハウスシリーズ 羊蹄山 40FT

Oil Pattern Distance: 40 Feet Reverse Brush Drop: 30 Feet Oil Per Board: 40 uL
 Forward Oil Total: 10.96 mL Reverse Oil Total: 9.24 mL Volume Oil Total: 20.2 mL
 Forward Boards Crossed: 274 Boards Reverse Boards Crossed: 231 Boards Total Boards Crossed: 505 Boards

	Start	Stop	Loads	Mics	Speed	Crossed	Start	End	Feet	T.Oil
1	4L	4R	1	40	10	33	0.0	0.0	0.0	1320
2	6L	6R	2	40	14	58	0.0	3.9	3.9	2320
3	7L	7R	1	40	18	27	3.9	6.4	2.5	1080
4	9L	9R	1	40	18	23	6.4	8.9	2.5	920
5	10L	10R	3	40	22	63	8.9	18.2	9.3	2520
6	11L	11R	2	40	22	38	18.2	24.4	6.2	1520
7	12L	12R	1	40	26	17	24.4	28.0	3.6	680
8	13L	13R	1	40	30	15	28.0	32.2	4.2	600
9	2L	2R	0	40	30	0	32.2	40.0	7.8	0

	Start	Stop	Loads	Mics	Speed	Crossed	Start	End	Feet	T.Oil
1	2L	2R	0	40	30	0	40.0	30.0	-10.0	0
2	13L	13R	1	40	22	15	30.0	26.9	-3.1	600
3	12L	12R	2	40	18	34	26.9	21.8	-5.1	1360
4	11L	11R	2	40	18	38	21.8	16.7	-5.1	1520
5	10L	10R	2	40	14	42	16.7	12.8	-3.9	1680
6	9L	9R	2	40	14	46	12.8	8.9	-3.9	1840
7	8L	8R	1	40	10	25	8.9	7.5	-1.4	1000
8	5L	5R	1	40	10	31	7.5	6.1	-1.4	1240
9	2L	2R	0	40	10	0	6.1	0.0	-6.1	0



- Left 90°
- Left 45°
- Front 0°
- Front 45°
- Overhead
- Right 90°
- Right 45°